



CPS Connection ANGEL Component (Nugget) IT Administrator's Guide

When you setup eInstruction's CPS Connection ANGEL Component (Nugget), instructors can integrate ANGEL courses with CPS. For more information on this feature, please speak with your eInstruction representative.

Install the CPS-ANGEL Connection (CPSConnection)

You will need to install the CPS ANGEL Custom Component (Nugget) and configure your settings in order to properly setup the connection. To do this, you will need to add the custom ANGEL component to the Portal Components Manager.

Applicable ANGEL Version(s): 7.1 and higher

Applicable CPS Versions(s): 5.3 and higher

1. You will receive the five files needed for installation in an archive file, normally in the .zip format. Before you begin, extract these files and have them ready for installation.
2. Login to the ANGEL **Administrator Console**.
4. Navigate to the **Portal Components** area. If you are unsure about locating Portal Components in your version of ANGEL, please refer to your ANGEL Administrator manual.

5. Navigate to the **Files Manager**.

NOTE: Screen shots are given for guideline purposes but your ANGEL version and installation may vary.

eInstruction University Angel 7.2
Home > Administrator Console > Portal Components

Registered Portal Components

[File Manager](#) [Register New](#) [Re-register All](#) [Refresh INI Files](#)

#	Name	ID	Public	User	Adm
1.	Section Announcements	SectionAnnouncements	0	0	0
2.	Section Calendar	SectionEvents	0	0	0
3.	Section Mail	InTouchMail	0	1	0
4.	Section News	SectionNews	0	0	0
5.	Section News and Events	InTouchNews	0	0	0
6.	Section Polls	SectionPoll	0	0	0
7.	Section Resources	SectionResources	0	0	0
8.	Section Roster	InTouchRoster	0	0	0

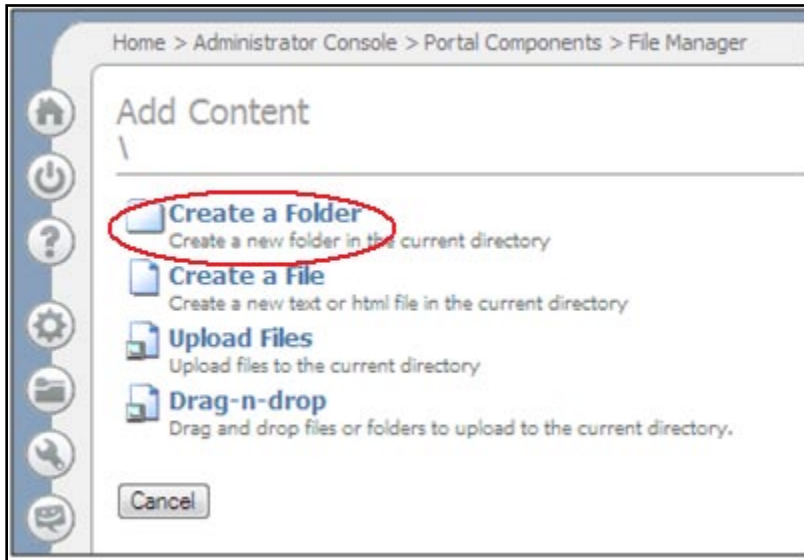
6. Choose to **Add Content**.

Portal Component File Manager
Size: 1.4 MB

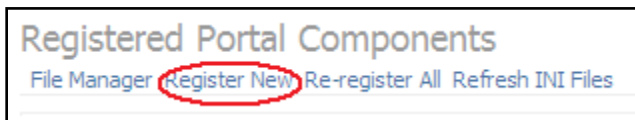
[Add Content](#) [Download All](#)

- AboutMe**
Last Modified: 7/12/2007 10:57:38 AM
download rename copy move zip delete
- AboutSection**
Last Modified: 7/12/2007 10:57:40 AM
download rename copy move zip delete
- ActivityAtAGlance**
Last Modified: 7/12/2007 10:57:35 AM
download rename copy move zip delete
- AdminAccountMgt**

7. Create a Folder called CPSConnection.



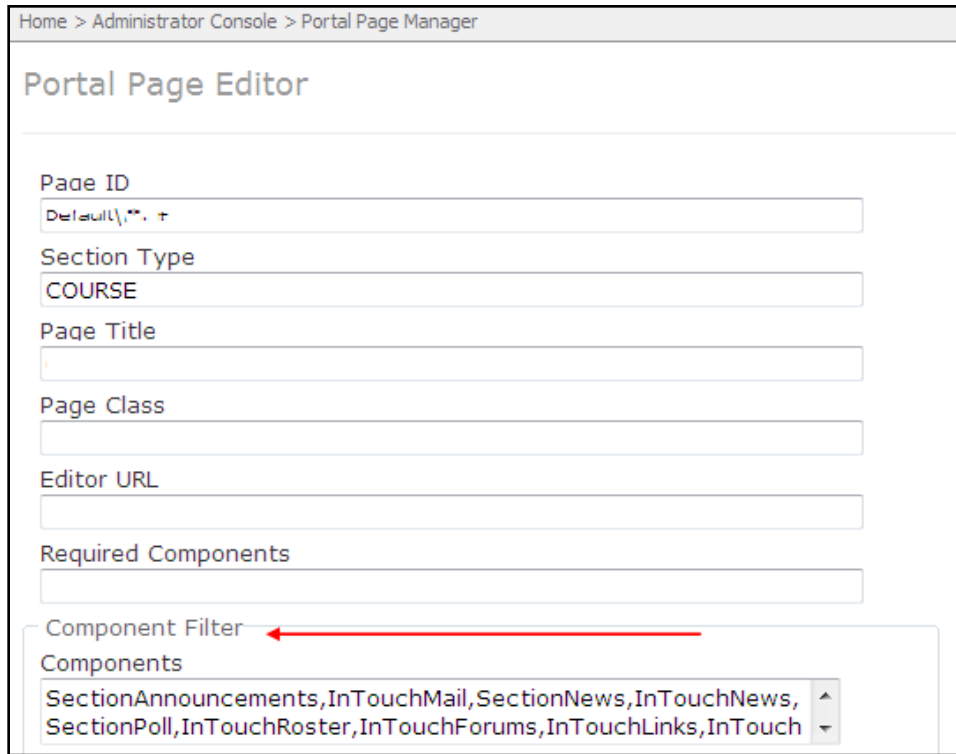
8. There are five files included in the CPS-ANGEL component distribution. Upload the custom CPS-ANGEL component files to your CPSConnection folder by **Upload a File** or **Drag-n-Drop**.
9. After returning to the Registered Portal Components page, click the hyperlink for **Register New**.



For ANGEL versions below 7.3 - Instruct the Portal Page Manager to make this component available to add to a page:

1. Navigate to the **Admin Console**.
2. Navigate to the **Portal Page Manager**.
3. Click **EDIT** to the left of the page you want this component to display on.

4. Go to section titled **Component Filter**.



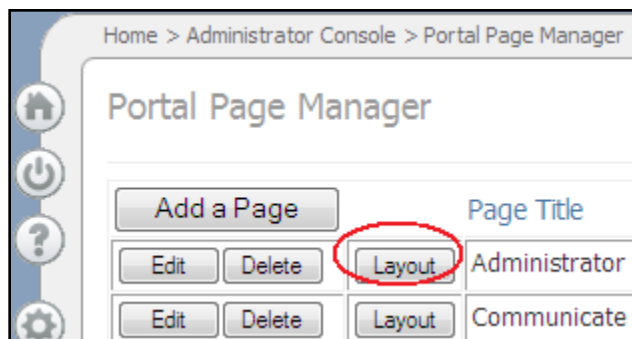
The screenshot shows the 'Portal Page Editor' interface. At the top, there is a breadcrumb trail: 'Home > Administrator Console > Portal Page Manager'. Below this, the title 'Portal Page Editor' is displayed. The form contains several input fields: 'Page ID' (with 'Default\...' and a plus sign), 'Section Type' (with 'COURSE'), 'Page Title', 'Page Class', 'Editor URL', and 'Required Components'. At the bottom, there is a 'Component Filter' section with a red arrow pointing to it. Below the 'Component Filter' label is a 'Components' dropdown menu containing the text: 'SectionAnnouncements,InTouchMail,SectionNews,InTouchNews,SectionPoll,InTouchRoster,InTouchForums,InTouchLinks,InTouch'.

5. In the box **Components**, go to the end of the list and add CPSConnection to the end of the list.
6. Click **Save**.

Make the component display on a given page:

1. Navigate to the **Admin Console**.
2. Navigate to the **Portal Page Manager**.

3. Click **LAYOUT** to the left of each home page you want to display this component on.



4. Click on your CPSCConnection component in the list of available components.
5. Click **Add the Component**.
6. Click **Save**.

Configure the CPSCConnection Component

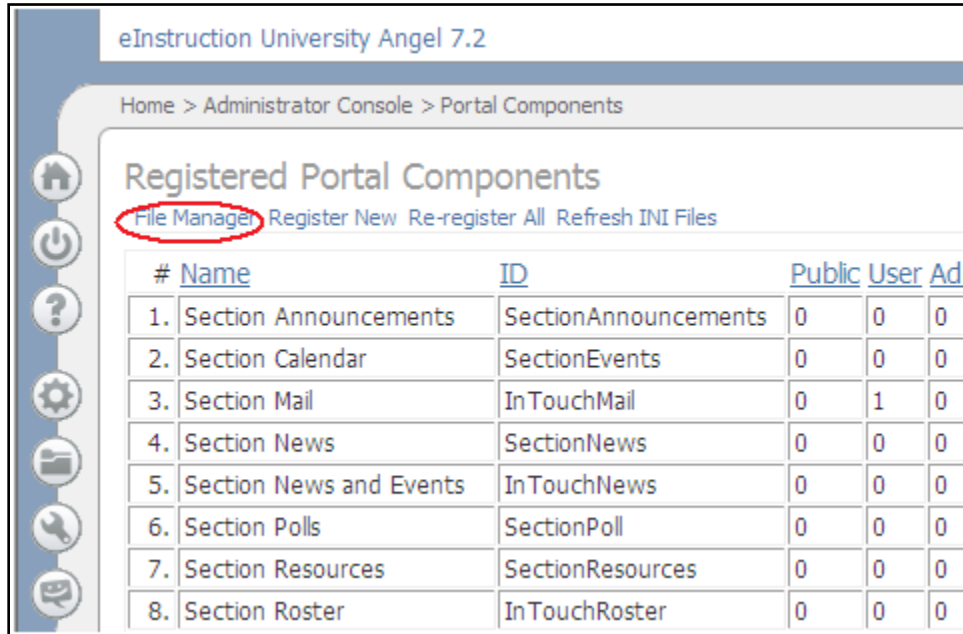
Before instructors begin to use the new CPSCConnection Component (nugget) you will need to configure the connection.

Note: Before your CPS-ANGEL connection will work, you should send the URL of your ANGEL server to bb@einstruction.com. An LMS support representative will enter your URL into the eInstruction LMS/SMS list to enable communication between your custom CPSCConnection component and CPS. The LMS support representative will use the name of your school as the Site ID.

1. If you are not already logged into the ANGEL Administrator Console, do so now.
2. Navigate to the **Portal Components** area. If you are unsure about locating Portal Components in your version of ANGEL, please refer to your ANGEL Administrator manual.

3. Navigate to the **Files Manager**.

NOTE: Screen shots are given for guideline purposes but your ANGEL version and installation may vary.



eInstruction University Angel 7.2

Home > Administrator Console > Portal Components

Registered Portal Components

[File Manager](#) [Register New](#) [Re-register All](#) [Refresh INI Files](#)

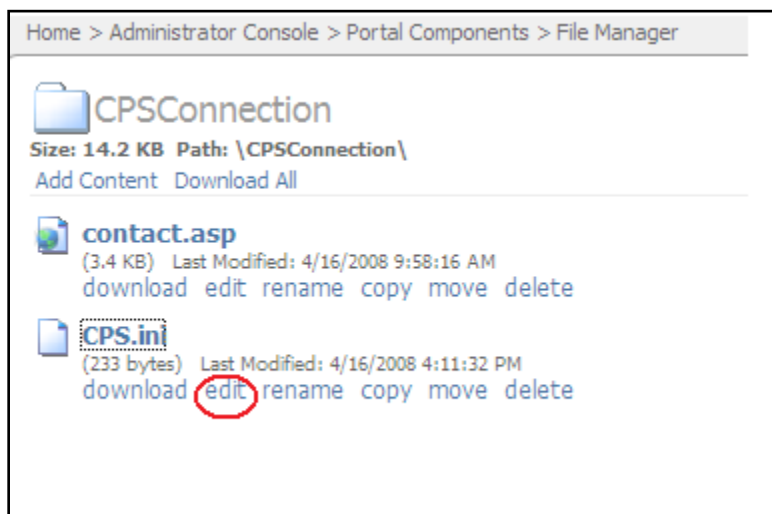
#	Name	ID	Public	User	Adm
1.	Section Announcements	SectionAnnouncements	0	0	0
2.	Section Calendar	SectionEvents	0	0	0
3.	Section Mail	InTouchMail	0	1	0
4.	Section News	SectionNews	0	0	0
5.	Section News and Events	InTouchNews	0	0	0
6.	Section Polls	SectionPoll	0	0	0
7.	Section Resources	SectionResources	0	0	0
8.	Section Roster	InTouchRoster	0	0	0

3. Navigate to the **Files Manager**.
4. Scroll to the **CPSSConnection** folder and open the folder.



CPSSConnection
Last Modified: 3/17/2008 3:26:00 PM
[download](#) [rename](#) [copy](#) [move](#) [zip](#) [delete](#)

5. Scroll to the **CPS.ini** file and click the **edit** hyperlink.



Home > Administrator Console > Portal Components > File Manager

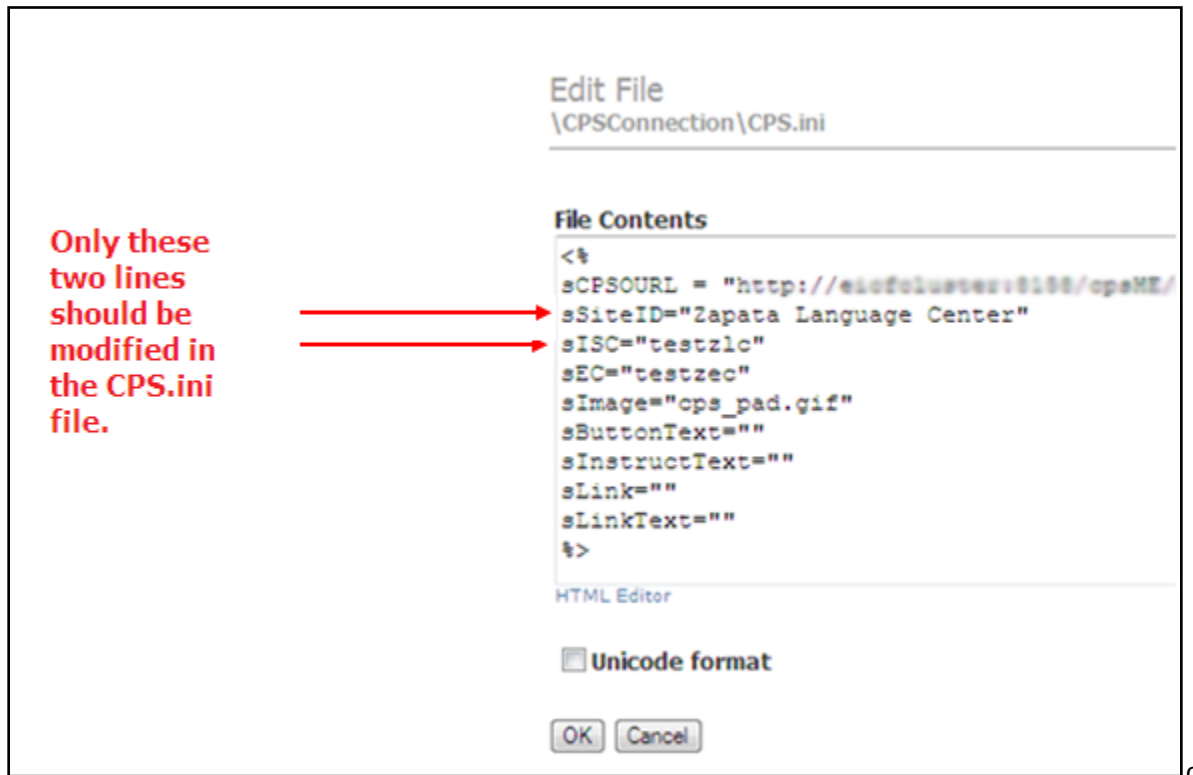
CPSSConnection

Size: 14.2 KB Path: \CPSSConnection\
[Add Content](#) [Download All](#)

contact.asp
(3.4 KB) Last Modified: 4/16/2008 9:58:16 AM
[download](#) [edit](#) [rename](#) [copy](#) [move](#) [delete](#)

CPS.ini
(233 bytes) Last Modified: 4/16/2008 4:11:32 PM
[download](#) [edit](#) [rename](#) [copy](#) [move](#) [delete](#)

6. This will open the **CPS.ini** file in the ANGEL editor.



7. **Only two lines should be modified in this file. Modifying other lines or other files within the CPSConnection folder can result in connection failures.** The lines that should be modified to configure your component are as follows:

- sSiteID="Your School Name"
- sISC="InstructorSetupCode"

Setting the Site ID:

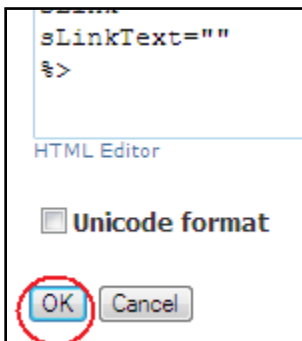
The line for sSiteID should be placed between the quotes to reflect the name of your school. For example, Cole College would be displayed as: sSiteID="Cole College"

Setting the Instructor Setup Code (optional):

The line for sISC can be changed to reflect an optional code if your school has an exclusivity deal. If this line is left blank and an instructor setup code is used later on, instructors will be able to

enter the code when they upload their class rosters. If an Instructor Setup Code is available at this time, enter it between the quotes like this: `sISC="eC12345"`

Be sure to click the OK button after entering changes or your changes will not save.



Troubleshooting Common Issues with the ANGEL-CPS Connection:

If you have any difficulties installing or setting up your ANGEL-CPS Connection, check the following:

- You should have received a group of files to install the CPS Connection Component/Nugget. Did you place those files in a folder called CPSCConnection by choosing **Add Content** in the **Portal Components File Manager**?
- Did you **Register New** on the **Registered Portal Components** Page?
- Did you send your ANGEL server URL to bb@einstruction.com to allow for the connection between the CPSCConnection component and CPS?
- Did you add your Site ID to the sSiteID line in CPS.ini? (If the Site ID is left at default, instructors will have to choose the school from a long list which can be confusing.)
- Did you place the Site ID between the quote marks in the CPS.ini file? (The component will not work properly if one or both quote marks are removed. Check to see that a quote mark is present before and after the Site ID.)
- Did you remember to save your changes when editing the CPS.ini file? (Changes must be saved by clicking the OK button. You may have to scroll down to see the button if you have a long list of components/files.)
- Have any of the other files in CPSCConnection been edited or have any additional lines in CPS.ini been modified? If this is possible, you may want to remove the files in your CPSCComponents folder in the Portal Components File Manager. Upload them again from the originals and check to see if your CPS-ANGEL connection works.

If you need additional assistance with this feature, you may contact your einstruction representative or www.einstruction.com/support.